

BOARD of ZONING APPEALS



Meeting Date: June 21, 2022
Type of Agenda Item: Special Exception
Docket#: SE-2022-02
Attachments: Location Map

REQUEST

The City of Simpsonville has received an application requesting a Special Exception for an Ambulatory or Outpatient Health Care Facility to operate from the location at 106 W. Georgia Rd. (Tax Map# 0307.00-06-010.00)

LOCATION & SITE DESCRIPTION

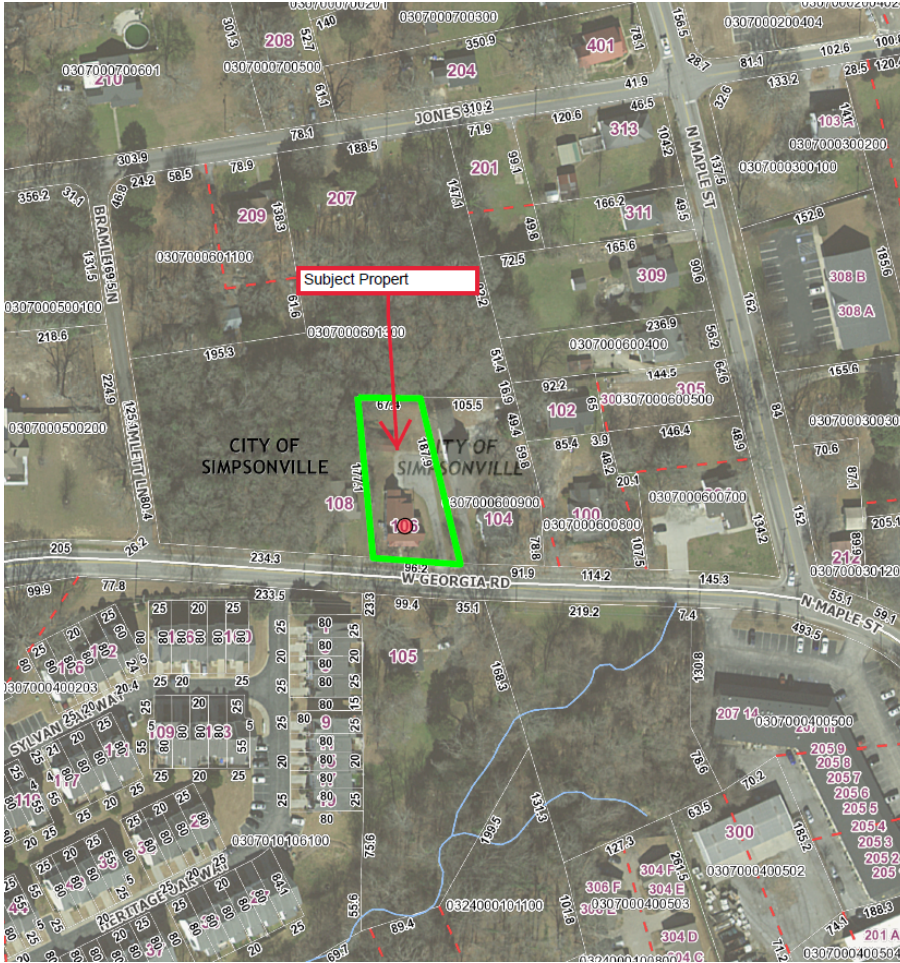
This property is zoned R-OI (Residential, Office & Institutional) district which permits these uses by Special Exception. This site contains a white, two-story home with parking in the rear.

MORE INFORMATION

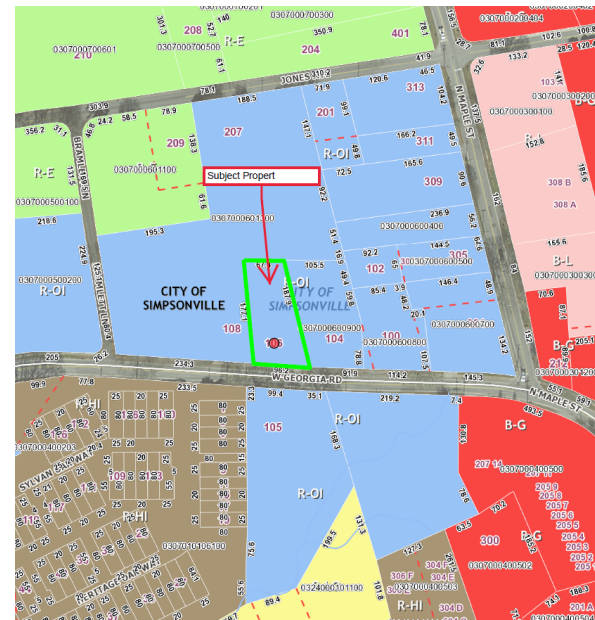
For more information or inquire about the petition, contact the Simpsonville Planning & Zoning Department at 967-9526

SE-2022-02 Special Exception for Medical Use in R-OI

Aerial Map



Zoning Map



- R-E (Residential Estate Density)
- R-Lo (Residential Low Density)
- R-Hi (Residential High Density)
- R-OI (Resid. Neighborhood, Office & Institution)
- B-L (Business Limited)
- B-G (Business General)

106 W. Georgia Rd. Simpsonville, SC 29680

