

BOARD of ZONING APPEALS



Meeting Date: December 20, 2022
Type of Agenda Item: Special Exception - Pet Care Service
Docket#: SE-2022-04
Attachments: Location Map

REQUEST

The City of Simpsonville has received an application requesting a Special Exception for a pet care service development to establish at 308 W. Georgia Rd. (Tax Map# 0306.00-01-006.00) The proposed single-family home will be utilized as the pet care facility by appointments.

LOCATION & SITE DESCRIPTION

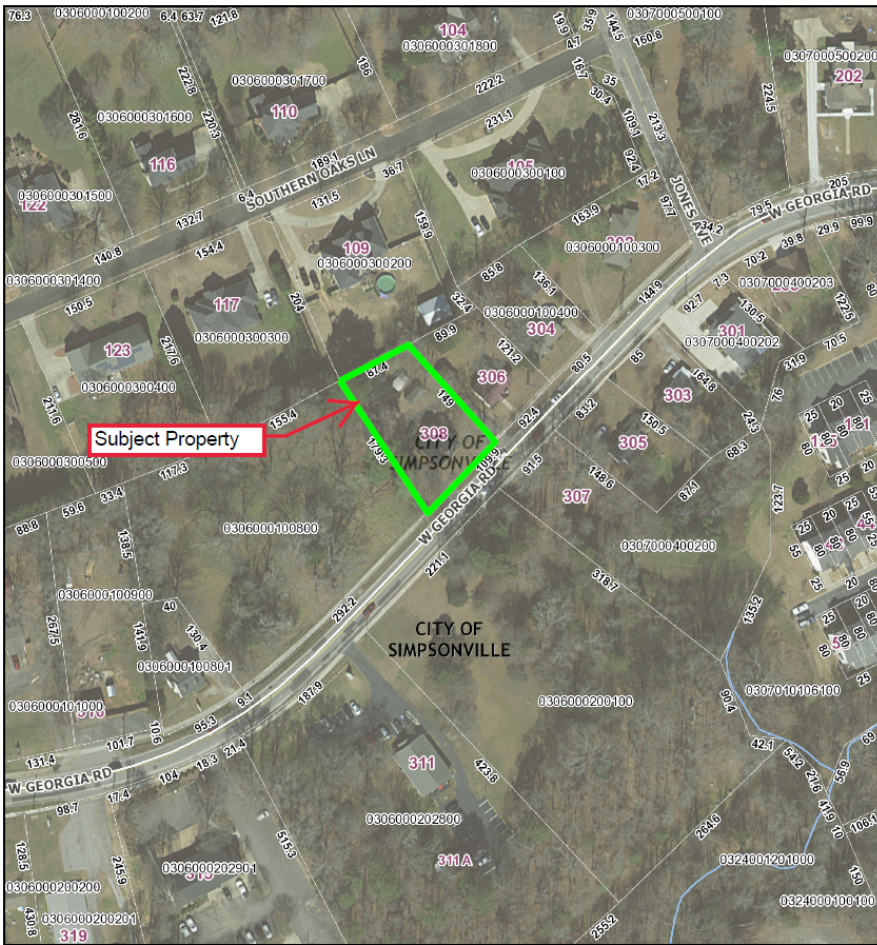
This property is zoned R-OI (Residential Neighborhood, Office, & Institution) which permits pet care service uses by Special Exception. This site contains a small, grey colored, single-family style home which fronts W. Georgia Rd.

MORE INFORMATION

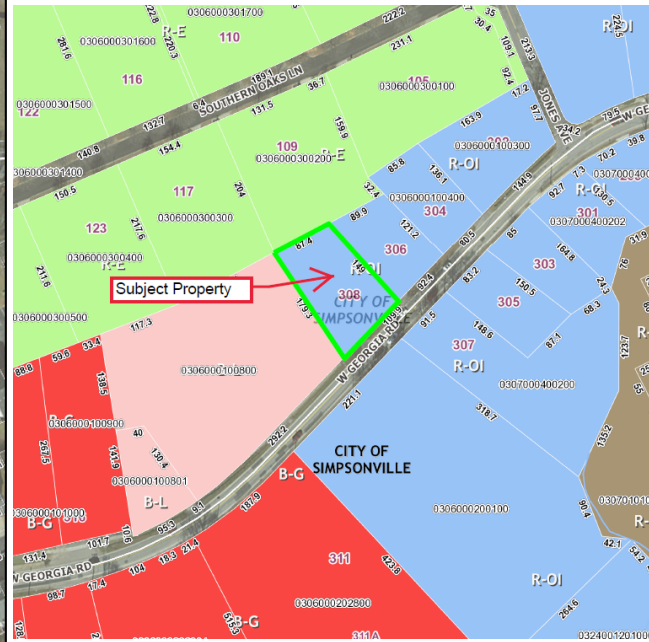
For more information or inquire about the petition, contact the Simpsonville Planning & Zoning Department at 967-9526



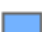
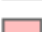

SE-2022-04 Special Exception for Pet Care Service

Aerial Map



Zoning Map



-  R-E (Residential Estate Density)
-  R-Hi (Residential High Density)
-  R-OI (Resid. Neighborhood, Office & Institution)
-  B-L (Business Limited)
-  B-G (Business General)

308 W. Georgia Rd. Simpsonville, SC 29680

