

# BOARD of ZONING APPEALS



**Meeting Date:** September 19, 2023  
**Type of Agenda Item:** Special Exception – Construction Service  
**Docket#:** SE-2023-03  
**Attachments:** Location Map

---

## ***REQUEST***

---

The City of Simpsonville has received an application requesting a Special Exception for a construction service to establish at 106 Loma St. (Tax Map# 0320.00-01-010.04) The current metal shop will be converted to allow for a plumbing company to operate.

## ***LOCATION & SITE DESCRIPTION***

---

This property is zoned B-G (Business General), which allows construction use by Special Exception. This property is located on the corner of Loma St & Webb St, previously occupied by the business “Tires 2 Go”.

## ***MORE INFORMATION***

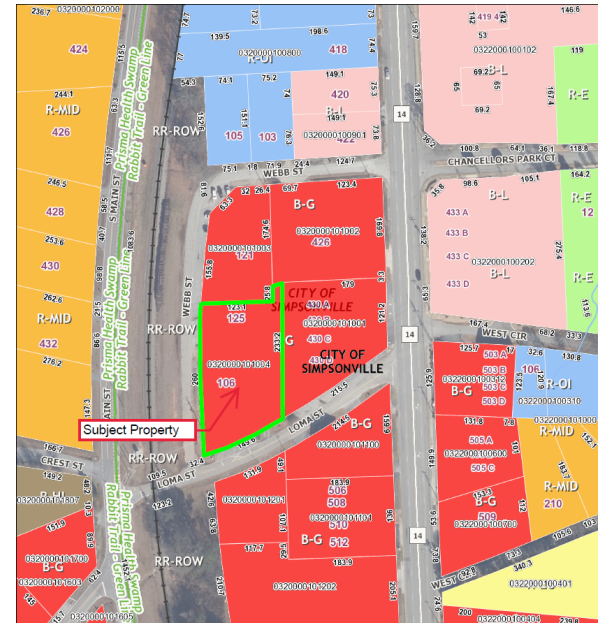
---

For more information or inquire about the petition, contact the Simpsonville Planning & Zoning Department at 967-9526

## Aerial Map



## Zoning Map



- R-Lo (Residential Low Density)
- R-Mid (Residential Medium Density)
- R-E (Residential Estate Density)
- R-Hi (Residential High Density)
- R-OI (Resid. Neighborhood, Office & Institution)
- B-L (Business Limited)
- B-G (Business General)

106 Loma St. Simpsonville, SC 29681

