

BOARD of ZONING APPEALS



Meeting Date: August 18, 2020

Type of Agenda Item: Special Exception

Attachments: Location Map
Zoning Map

REQUEST

The City of Simpsonville has received an application for a special exception request to allow for a construction service (Element Design Build LLC) to establish within the Business General Zoning District

LOCATION & SITE DESCRIPTION

This site is located at 510a South Main St. Tax map number 0320.00-01-016.04.

Current Zoning is B-G, Business General District.

MORE INFORMATION

For more information or inquire about the petition, please post your comment to the link below:



boza@simpsonville.com

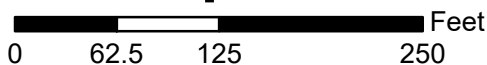
SE-2020-06 510 S. Main St Construction Service



Greenville County GIS Division, Greenville, South Carolina 29601

Legend

-  Subject Property
-  Parcels

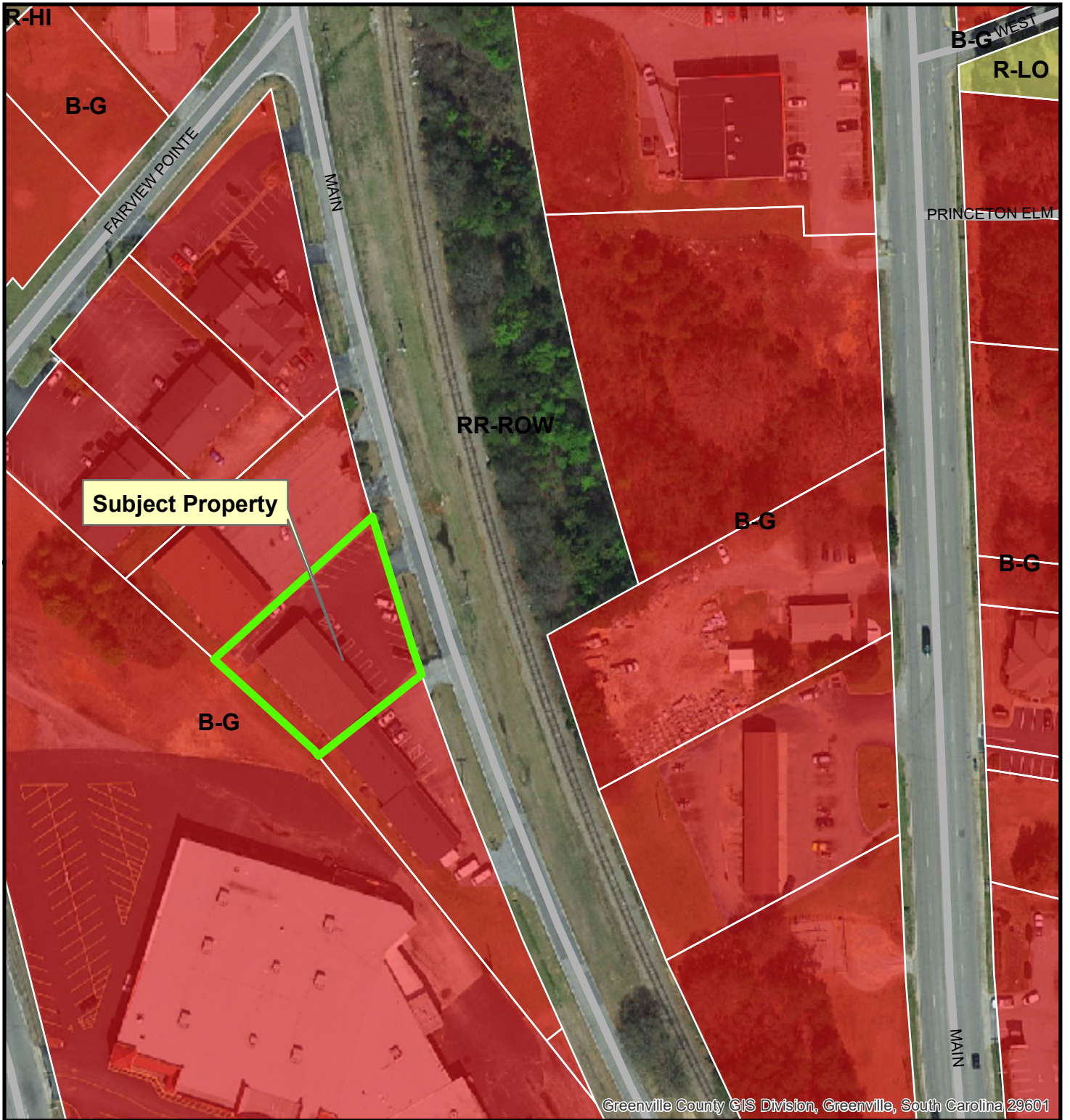


Created on August 6, 2020



Reproduction of this map is prohibited without permission from the City of Simpsonville.

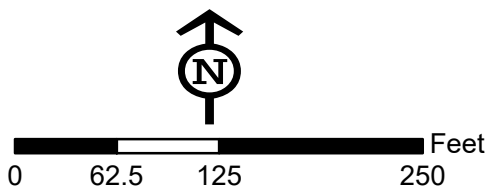
DISCLAIMER: The information contained herein is for reference purposes only. The City of Simpsonville makes no warranty, express or implied, nor any guarantee as to information provided herein. The City of Simpsonville explicitly disclaims all presentations and warranties. The City of Simpsonville assumes no liability for any errors, omissions, or inaccuracies in the information provided herein.

SE-2020-06 510 S. Main St Construction Service



Legend

-  Subject Property
-  Parcels



Created on August 6, 2020

Reproduction of this map is prohibited without permission from the City of Simpsonville.

DISCLAIMER: The information contained herein is for reference purposes only. The City of Simpsonville makes no warranty, express or implied, nor any guarantee as to information provided herein. The City of Simpsonville explicitly disclaims all presentations and warranties. The City of Simpsonville assumes no liability for any errors, omissions, or inaccuracies in the information provided herein.